



**ADAKAN
GROUP**
ENDÜSTRİYEL KİMYA DENİZCİLİK A.Ş.



POLIMOLE

GENERAL PRODUCT CATALOG

ABOUT US

Çağkan Kankim Chemistry Limited Company, which started out in 1996 and has a long history in its sector. It is one of the most efficient and reliable companies in the field of chemicals, solvent raw materials, sales and supply. Our company, which has been developing itself every day since the day it was founded, has not limited its production to solvent only, has continued to be useful to the sector by adding new products to its production. Our group, which has also decided to produce basic industrial technical products, marine chemicals and hygiene-cleaning chemicals that will reach the end user in order to create the supply in the face of the demands that have arisen recently, has laid the production floor of the finished and semi-finished product "Adakan Industrial Chemistry and Marine INC." was formed within our company and group companies were gathered under the umbrella of ADAKAN GROUP.

COMPANYS OF ADAKAN GROUP

- ÇAĞKAN KANKİM KİMYA LTD.ŞTİ.
- ADAKAN ENDÜSTRİYEL KİMYA DENİZCİLİK A.Ş.

OUR PRODUCTS IS ADAKAN GROUP

- INDUSTRIAL AND TECHNICAL CHEMICALS
- HYGIENE – CLEANING CHEMICALS
- DISINFECTANTS
- MOISTURISING COLOGNE
- LIQUID AND GEL DISINFECTANTS
- YACHT AND SHIP CHEMICALS
- NATURAL GRASS PAINT AND PLANT COLORANT
- GOLDEX 750 WASH SHAMPOOS FOR SENSITIVE METALS
- AERESOLS (MOLD RELEASE AND MOLD PROTECTOR)
- CAR CARE PRODUCTS

PRODUCE INFRASTRUCTURE

ADAKAN GROUP has 2500 m2 closed area factory for the production of the most economical and high quality products based on its raw material supplying power and advantage, CE Certificate, GHP Certificate, GMP Certificate, ISO 9001: 2008 Quality Management System, ISO 14001: 2004 Environmental Management System, ISO 22000:2005 Food Security Management Systems, ISO 45001:2018 Occupational health and safety is based on quality policy with production policy and acting as a solution partner before and after sales.

All the products we offer to the market, the manufacturer's documents and usage information are provided to our customers. Our aim is to maintain our honest and ethical trade, quality products and reliability in the market. Besides this, without compromising on quality, reasonable prices, long-term work with a quality product understanding and to exist in the market renewing ourselves every day is one of our priority goals. Except our own registered trademarks 'Private Label', the production capacity of our group which has production plan and infrastructure for service to private brands is daily 60 tons. Our raw material stocks and production and semi products capacity are 100 tons. Our aim is to maintain our honest and ethical trade, quality products and reliability in the market. Besides this, without compromising on quality, reasonable prices, long-term work with a quality product understanding and to exist in the market renewing ourselves every day is one of our priority goals. Except our own registered trademarks 'Private Label', the production capacity of our group which has production plan and infrastructure for service to private brands is daily 60 tons. Our raw material stocks and production and semi products capacity are 100 tons.

OUR PRODUCT GROUPS

- POLYMOLE TECHNICAL
- POLYMOLE HYGIENE
- POLİMOLE CAR CARE
- POLİMOLE AERESOLS
- POLYMOLE DECK MAINTENANCE AND PROTECTION
- POLİMOLE MARITIME JOINT STOCK COMPANY
- ECOLOR ORGANIC PLANET DYE
- GOLDEX 750 WASH SHAMPOOS FOR SENSITIVE METALS
- JETSİL SPRAY, CLEANING PRODUCTS
- PROADA AND PEARLY GENERAL CLEANING PRODUCTS
- MADAM PONTİ MOISTURISING COLOGNE

GENERAL CLEANING PRODUCTS

KITCHEN HYGIENE PRODUCTS

FOOD HYGIENE

PERSONAL HYGIENE PRODUCTS

LAUNDRY HYGIENE PRODUCTS

SOLVENT BASED CLEANERS

PROTECTIVE AND LUBRICANT PRODUCTS

ACIDIC CLEANERS

WATER BASED ALKALINE SOLVENTS

GENERAL CLEANING PRODUCTS

FLOOR CLEANER

CONCENTRATED SCENTED GENERAL CLEANING PRODUCT.

Floor cleaner is a concentrated general purpose cleaner for hard surfaces , cleans and shine the surfaces. Leaving a nice odour. Can be used on all washable surfaces. Can be diluted 1part to 150 parts water



PERFECT

READY TO USE GENERAL PURPOSE CLEANER

Perfect is ready to use general purpose cleaner for hard washable surfaces with scent of flowers



MULTI CLEAN

CONCENTRATED CLEANER AND DEGREASER

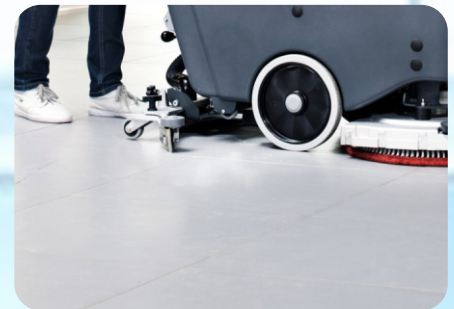
Multi clean is a versatile cleaner and degreaser on hard surfaces as well on fabric , carpet and leather as stain remover. Easy to use can be diluted 1:20 parts with water.



SUPER COMBI MX

CONCENTRATED CLEANER AND DEGREASER FOR MACHINE USE

Super combi MX is a cleaner for carpets and can also be used for cleaning of hard surfaces. It is to be used with brushing machines , it is a concentrated product that can be diluted 1:20-1:100 Depending on the surface to clean



RINOFIN

HAND TOOLS AND EQUIPMENT SURFACE DISINFECTANT

Irinofin is a tool and equipment disinfection solution . After cleaning of used tool disinfection is made by dipping the tools in the solution for 2-5 min.



GENERAL CLEANING PRODUCTS

PRO CLEAN

ALKALINE HARD SURFACE CLEANER AND DEGREASER

Alkaline hard surface cleaner for degreasing of hard surfaces for manual use, cleans also machines and equipments of mineral oil and grease.



PRO CLEAN MX

HARD SURFACE CLEANER FOR MACHINE USE

Proclean MX is to be used for mechanical surface cleaning of hard surfaces for degreasing of hard surfaces. Surface cleaning machine detergent



OXY TILE CLEANER

MARBLE AND STONE SURFACE CLEANER

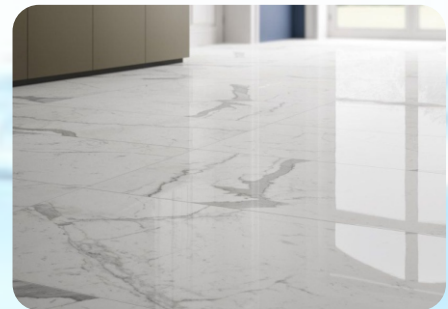
Oxygen based cleaner and descaler on marble and stone and tiles. It cleans and brighten dull marble and stone from scale and minerals



FLOOR WARNISH

POLYMER WORNISH EMULSION

Floor warnish is a polimer emulsion wax used on Linoleum and marbels to shine dull surfaces. Easy to use and economical



ULTRA FORCE 100

CONCENTRATED ULV FOG MACHINE DISINFECTANT

ULTRAFORCE 100 is an air and surface disinfectant used with ULV mist and fog machine. It can be used in health sector and food preparing industry. Surfaces and machine equipments every place where hygien and disinfection is required can be used safely.



GENERAL CLEANING PRODUCTS

ULTRA FORCE 500

ULV NANO SILVER CONTAINING AIR AND SURFACE DISINFECTANT AND SANITIZER

ULTRAFORCE 500 is an air and surface disinfectant containing NANO SILVER used with ULV mist and fog machine. It can be used in health sector and food preparing industry. Surfaces and machine equipments every place where hygien and disinfection is required can be used safely.



SANFIX

CONCENTRATED ANTISTATIC SURFACE CLEANER AND DISINFECTANT

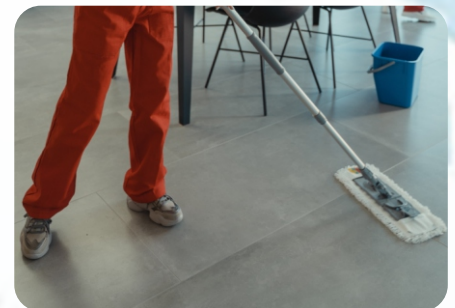
SANFIX is an antistatic and sanitizing surface cleaner. Hospitals and other health and food sector where hygien is required can be used safely environmetally frienly.



DUST FREE

DUST REMOVER AND ANTI DUST

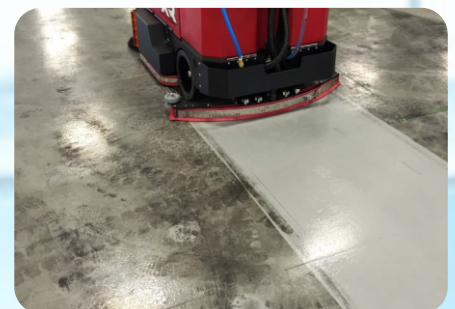
Dust Free is a special product to clean and collect dust on floor and act as a anti dust to repell dust on floor and sustain the polish look.



WAX REMOVER

POLISH REMOVER AND CLEANER

Wax Remover is a high concentrated wax and polish remover on linoleum and PVC covered floors. This product cleans and prepares the floor to waxing and polishing of linoleum and PVC floors It can be used neat or diluted upto 1:10 parts with water.



FLOOR WAX

CRYSTALLIZED POLISH

Floor wax is to be used on Marble, travertine, stone surfaces, such as calcium carbonate. Marble and stone floors gets a shiny luster and worn-out parts can be repaired.

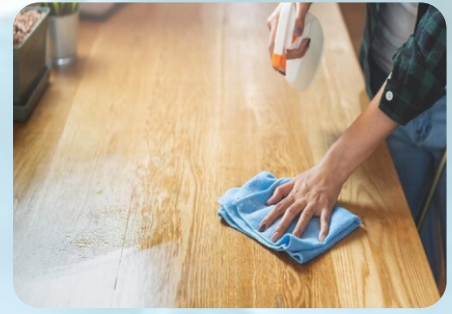


GENERAL CLEANING PRODUCTS

TREE SHINE

CLEANING OF WOODEN AND LAMINATE SURFACES

Tree Shine is to be used with a spray on the wooden like surfaces, spray on the surface and wipe to clean with a cloth, it can also be used on floor cleaning on laminates, dilute with water 1:10-1:20 and mop the surface to clean. No need for rinsing.



FLOOR CARE

CARE AND CLEAN OF WAXED FLOORS

Floor Care is a cleaning agent specially designed for regular cleaning and maintenance of waxed and polished surfaces such as marble and granite.



PINE CLEAN

PINE SCENTED GLOSSY FLOOR SURFACE CLEANER

Concentrated, pine scented, is a versatile product used for general cleaning purposes. Can be used on all kind of surface that can be washed with water. Protects floor gloss and helps to prolong the shiny look.



FRAGRANCE

AIR AND ROOM FRAGRANCE

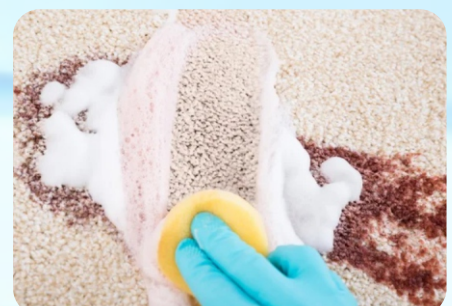
Offices, hotel rooms, shared living spaces and environments with bad smelling air can be changed to fresh air by spraying to the air. Fragrance eliminates bad odour and gives a pleasant scented air.



CARPEX

CONCENTRATED CARPET SHAMPOO FOR MANUAL USE

Carpex is to be used by manual cleaning of synthetic and wool carpets . Contains optical brighteners and surfactants that works from the deep to top of the surface , refreshes the colors and brightness, provides in-depth cleaning.



GENERAL CLEANING PRODUCTS

CARPEX MX

CARPET SHAMPOO FOR MECHANICAL USE

Carpex MX is to be used by mechanical cleaning of synthetic and wool carpets. Contains optical brighteners and surfactants that works from the deep to top of the surface, refreshes the colors and brightness, provides in-depth cleaning.



TOA CLEAN

BATHROOM AND BOWL CLEANER READY TO USE

Bathroom and toilet bowl cleaner of lime and scale deposits. It is ready to use and cleans surfaces quick and safely from scale and buildup residues.



HYP0

CHLORINATED BLEACH

HYP0 is chlorinated bleaching agent for surface cleaning disinfection as well Bleaching additive in the laundry wash.



DRAGON

TICKENED CLORINATED BLEACH

DRAGON is tickened bleaching agent that clings on vertical surfaces and also can be used as bleaching additive for laundry wash. As well surface cleaning and disinfection.



SHINE ALL

SENSITIVE SURFACE CLEANER

Shine All is to be used on delicate and sensitive surfaces, such as marble and tiles and armatures in toilet and bathrooms. Cleans the surface without damaging and scratch gives dull armatures a shiny look and preserves from scale formations. It is a neat use product but can be diluted for light cleaning 1:5-1:10



GENERAL CLEANING PRODUCTS

SHINE WC PLUS TOILET AND URINAL CLEANER

Shine wc Plus is heavy duty lime and scale remover from toilet bowls urinals. due to its viscosity it clings on vertical surfaces and cleans from yellowish lime and scale formations. Squeeze on the surface and brush to clean and wash off with water. It is a neat used product.



SHINE WC TOILET BOWL CLEANER

Shine wc is heavy duty lime and scale remover From toilet bowls urinals. Due to its viscosity it clings on vertical surfaces and cleans from lime and scale formations. Squeeze on the surface and brush to clean and wash off with water. it is a neat used product.



SHINE FRESH CONCENTRATED CERAMIC TILE CLEANER

Shine Fresh is to be used on bathroom sink, toilet bowls and ceramic tiles , cleaning of lime deposits and stubborn stains. By daily use it prevents lime and scale build up. It is dilutable 1:5 – 1:50 depending on the surface stain. It can be used on armatures by diluting 1:10parts with water.



DIAMOND SI CONCENTRATED WATER REPELLANT GLASS CLEANER

This product can be used to clean glass, mirror, television, computer, and polished surfaces such as furniture cleans without leaving strikes on windows an gives a water repellent surface which can be used in wet areas to keep glass and mirrors stay clean.



DIAMOND GLASS CLEANER

Glass cleaner with antistatic effect can be used on glass, mirrors , plastics and wood surfaces. Cleans and makes the surface antistatic.d polishes dirt and dust on surfaces such as glass, mirror, metal, ceramic, plastic.



GENERAL CLEANING PRODUCTS

FORCE CLEAN 500

HYGIENE CLEANER FOR WASTE CONTAINERS

Force clean garbage container is used for cleaning and disinfection. Municipalities, factories, organized industries, etc. garbage trucks in places after unloading the garbage It is squeezed into and out of the container as foam.

USE : It is used with a pressure spray foam gun by diluting 1:50 -1:80 as a concentrate.

ADVANTAGE:

- It contains high alkali and complexing agents.
- Easily dissolves organic dirt.
- It is effective against fly larvae.
- Destroys infectious bacteria and germs.

CAUTION: Use protective glasses and clothing against splashes during use.

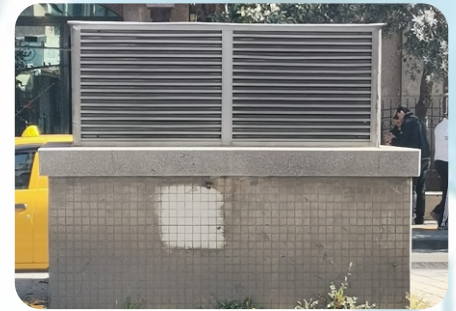


SUPER CLEANER

CERAMIC AND TILE CLEANER

A hard surface tile is used for cleaning dirt, debris, and mineral deposits caused by external factors on surfaces such as tiled floors and walls.

APPLICATIONS: It is an ideal product for cleaning pollution that occurs on building tiles, exterior surfaces of buildings, tunnels, and metros. It effectively removes pollutants caused by rainwater, exhaust fumes, and air pollution.



FLOOR SEALER

ONE COMPONENT EPOXY RESIN BASED WATER SEALANT FOR CONCRETE, TILE, CERAMIC POOLS

- It strengthens concrete, tile, and ceramic surfaces. Provides waterproofing. Protects against dusting and provides a coating with a thickness of 0.5-1.00 mm.
- It dries quickly. Provides a colored or colorless, transparent appearance according to preference.
- Its ease of application ensures both labor and time savings.



KITCHEN HYGIENE PRODUCTS

STEEL BRIGHT

STAINLESS STEEL CLEANER AND POLISHER

Stainless steel surface cleaner and stain remover. Stains caused by hard water and grease is easily removed from the surface. Dilutable 1:10 parts with fresh water.



STEEL SHINE

STAINLESS STEEL CLEANER AND POLISHER

Concentrated surface cleaner agent for stainless steel equipment , cleans light scale and oil. Also removes finger prints on surfaces.



FOAM CLEANER

CONCENTRATED ALKALINE FOAM CLEANER

FOAM CLEANER is professional alkaline heavy duty foaming cleaning agent. It has to be used with pressurised foam equipment , cleans oil and stains from walls and equipments where hygien is required.



ACIDO FOAM

CONCENTRATED FOAMING ACIDIC SURFACE CLEANER

FOAM CLEANER is professional acidic heavy duty foaming cleaning agent. It has to be used with pressurised foam equipment, cleans oil and stains from walls and equipments where hygien is required.



HYPO FOAM

CONCENTRATED CHLORINATED FOAMING AGENT

FOAM CLEANER is professional chlorinated heavy duty foaming cleaning agent. It has to be used with pressurised foam equipment , cleans oil and stains from walls and equipments where hygien is required.



KITCHEN HYGIENE PRODUCTS

PIPE CLEAN CLOGGED PIPE OPENER

Pipe clean is liqued pipe opener and cleaner with strong alkaline salts and surfactants. It is effective against clogged pipes from food and fat residues. Just pour an amount in the basin hole let act 2-3 minutes and flush with hot water until pipe and drain runs again.



WASH MATIC AUTOMATIC DISHWASHING DETERGENT

Automatic dishwashing machine detergent. Tannin and food stains are easily removed. To be used with dosing unit, non foaming effective cleaning, non staining.



WASH BRIGHT AUTOMATIC DISHWASHING, RINSING AID

Central water hardness in an effective, professional concentrated rinse agent for dishwashers. Provides an excellent brightness by reducing the rinse time.



DESCALER LM DISHWASHER LIME REMOVER

This is a lime and scale deposit remover to use on dishmachines and laundry machines where scale has build up. It is dilutable 1:20 – 1:40 parts with water.



VF-23 FRUIT AND VEGETABLE DISINFECTANT

VF 23 is a fruit and vegetable disinfectant which kills bacteria and fungi. It can be used also disinfectin food preparing surfaces which is in contact with food.



KITCHEN HYGIENE PRODUCTS

STAIN EX

METAL TRACE REMOVER ON DISH PLATES

Stain-ex is a special product which is to be used on plates that is scatched by knives and forks that gives a dull look on plates cleans the plates without harming the surface.



PRE-WASH

PRE-SOAK PRODUCT FOR DISHES

Pre wash is soaking product for dishes to maintain clean dishes, it dissolves starch and proteins, keeps forks and knives shiny after dish washing and removes stains from plates dilutable upto 1:50 parts with water



FOOD DES

CONCENTRATED EQUIPMENT AND SURFACE DISINFECTANT

Safely used in food industry with bacterial and fungicide effectiveness, QAC based product. It is to be used on surfaces that comes in contact with food. It can be used on surfaces prior to production or after the production, to sanitize surface and used equipments and machinery. Dilutable 1:10 – 1:50 with water.



BEST DISHWASHING LIQUID

CONCENTRATED DISHWASHING LIQUID

Manual dish washing detergent specially formulated with disinfecting properties. Very high cleaning and degreasing property Easy to rinse and disinfection. Dilutable up to 1:5 parts with water



YES

HAND WASH DISHWASHING LIQUID

Hand dishwashing liquid to wash the dishes manually, glass, porcelain and metals, can be used with hot or cold water. Protects the skin with contained humidifiers.



KITCHEN HYGIENE PRODUCTS

YES CLASSIC DES DISINFECTING HAND DISHWASHING LIQUID

Hand dishwashing liquid with disinfection properties to kill germs and bacteria, washing the dishes manually, glass, porcelain and metals, can be used with hot or cold water. Protects the skin with contained humidifiers.



SLS CONCENTRATED WATER BASED SOLVENT

Versatile and powerful concentrated waterbased solvent it can be used on all hard surfaces, like machinery and equipment but also in kitchens to clean tiles and equipments and filters, can also be used on aluminium surfaces. Dilutable 1:10-1:30 , spray on the surface let act for 1-2 min. And wipe off to clean, can also be used on floor tiles with brush or mop.



SUPER OVEN CLEANER OVEN AND GRILL CLEANER

This is a strong alkaline heavy duty cleaner for ovens and grills to remove burned oil and fat. Due to its viscosity , by spraying on the surface it clings and cleans from burned stains. Can be used on cold or warm surface.



DEGREASER 10 K CONCENTRATED LOW FOAMING DEGREASER

DEGREASER 10 K is a strong alkaline heavy duty cleaner and degreaser at factories and kitchens, easy to use spray and wipe off from all surfaces. Can be used on cold or warm surface.



FOOD HYGIENE PRODUCTS

TDC 2020

MILK TANK DISINFECTANT

TDC 2020 is milk tank disinfectant for dairies milk industry where milk is collected from yards. It can be applied before and after collection and transportation. Applicable with food handling regulations it is QAC based.



MSR 2020

MILK STONE REMOVER IN MILK TANKS AND EQUIPMENTS

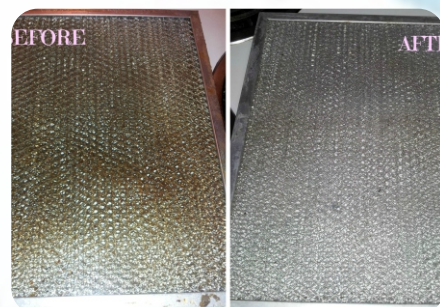
MSR 2020 is approved acid combined milk stone remover in milk tanks and equipments. Cleans fast and safe and does not leave residues after rinsing.



MTC 2015

MILK TANK CLEANER DEGREASER

MTC 2015 is a degreaser for milk industry cleaning of milk fat from tank and equipment it can be used with CIP or mechanical use. Dilutable and more effective with hot water cleans fast and safe no residues left after rinsing.



ACIDO FOAM

ACID FOAM CLEANER

ACIDO FOAM is a concentrated acid foam cleaner for use in food and dairy industry. It is used with foam making machines for removing of scale and minerals on machines and equipments where hygiene is required. Dilutable 1/30-1/100 with fresh water.



CMP 500

MILK BREAST NIPPLE DISINFECTION

CMP 500 is used cleaning and disinfection of cattles breast nipples to prevent bacteria from getting in the milk. It also prevents mastitis disease of cattles. CMP 500 need to be used before and after milking to sustain disinfection of nipples.



FOOD HYGIENE PRODUCTS

HDC 100 CATTLE HOOF DISINFECTANT

HDC 100 is cattle hoof disinfectant to be used for treatment and prevent bacteria spreading among the animals. It is used prior to cows goes for milking cows has to walk thru a cleaning channel with water and later on walk thru the disinfection solution for disinfection of hoofs. Disinfecting is great part of cattle health program.



HDC 200 CATTLE HOOF CLEANER

HDC 200 is a cattle hoof cleaner prior to disinfection of hoofs. This is a part of hygien program for animals health and hoof care. It is very important that hoofs are cleaned very well for their health and disinfecting is part of this program.



FOOD HYGIENE PRODUCTS

ULTRA FORCE 500

ULV AIR PURIFIER AND SURFACE DISINFECTANT

ULTRAFORCE 500 is a new technological air purifier and surface disinfectant containing nano silver ionized particles it can be used on all surfaces. Open air or closed areas, it's effective against bacteria, viruses and fungus.



DEGREASER

HEAVY DUTY FOAMING SURFACE DEGREASER WITH CHLORINE CONTENT

DEGREASER is high foaming surface degreaser and cleaner with chlorine content. It is useful for cleaning at food industry such as dairies, slaughteries and food producing places. Surface cleaning of machines and equipments by using hot water even most stubborn oil and fat will be dissolved easily.



COLD WASH CW-210

COLD WASH BOTTLE WASHING DETERGENT

COLD WASH CW 210 is for bottle washing machines in cold water. It cleans reusable bottles from organic and inorganic dirt. It is used with dosing unit.



HOT WASH HW-110

HOT WASH BOTTLE WASHING DETERGENT

HOT WASH HW 110 is washing detergent for reusable bottles in hot water at temperature of 50-75 degrees. It cleans bottles from organic or inorganic dirt. It is used with dosing unit.



PERSONAL HYGIENE PRODUCTS

CAMELYA BODY SHAMPOO

Body shampoo is made with a pleasant smell, it contains moisturizers that gives body soft and lively feeling and moisturizes the skin, can be used every day.



SAVOY HAIR SHAMPOO

Hair shampoo is made with a pleasant smell, it contains moisturizers that keeps hair always lively and moisturizes the skin, can be used every day.



SOFT LIQUID HAND SOAP

Liquid skin cleansers and moisturizer containing glycerin and lanolin. It cleans your hand and leaves a smooth feeling with a pleasant scent.



SOFT DES DISINFECTING LIQUID SOAP

Disinfectant effective against E-Coli, Salmonella and micro-organisms, liquid skin cleaning agent. Easy to rinse. Contains humidifiers to keep the skin soft.



SOFT CLASSIC MOISTURIZING, LUXURY LIQUID HAND SOAP

Liquid skin cleansers and moisturizer containing glycerin and lanolin. It cleans your hand and leaves a smooth feeling with a pleasant scent.



PERSONAL HYGIENE PRODUCTS

SOFT FOAM DES HYGIENIC FOAMING HAND SOAP

It is a fragrant foaming hand soap produced for hand washing. Thanks to the moisturizers and nutrients it contains, it keeps the skin clean and alive. It can be used safely every day.



SOFT FOAM READY TO USE LIQUID FOAM SOAP

It is to be used on Hotels, Restaurants, Offices, Institutions and businesses. It contains humidifiers that always keeps your hands soft.



FALCON HEAVY DIRT CLEANING HAND SOAP

Ready to use liquid with powerful cleaning surfactants which cleans the skin of heavy oil and dirt easily. Protects the skin even by frequently use. Contains humidifiers. Can be diluted 1:1-1:2 with water, although it is ready to use.



REDOX CONCENTRATED LIQUID SKIN CLEANSER

Developed for the industry and maintenance workers concentrated liquid skin cleanser. It easily removes impurities, such as oil, dirt and soot contains natural, powerful and refreshing skin moisturizer which protects the skin. 1/1-1/4 dilution ratio.



HAND CLEANER CONDITIONER (HCC) 77 CONCENTRATED LIQUID SKIN CLEANSER

Concentrated liquid hand cleaner for heavy duty cleaning of oil, dirt, soot stains are easily removed. Contains natural, powerful and refreshing skin moisturizer that always protects the skin. Anti-bacterial. Dilution rate 1/1-1/8 tractor.



PERSONAL HYGIENE PRODUCTS

TOUCHEX HS ALCOHOL-BASED HAND SANITIZER

Hand Sanitizer is an effective bactericidal and antiseptic rinse-free liquide hand disinfectant. To be used as personel protection at Hospitals, health centers and food sectors, against Infectious bacteria and viruses, kills germs, prevents spread of infectious diseases.



TOUCHEX HS JEL ALCOHOL-BASED HAND SANITIZER GEL

Hand Sanitizer gel is an effective bactericidal and virussidal rinse-free gel hand disinfectant. To be used as personel protection at Hospitals, health centers and food sectors, against Infectious bacteria and viruses, kills germs, prevents spread of infectious diseases.



MADAM PONTI MOISTURIZING LEMON COLOGNE

Madam Ponti is a lemon scented cologne. You can use it daily thanks to the moisturizer it contains.



ADALIN CREAMY MINERALISED HAND CLEANSER

ADALIN is a creamy hand cleanser containing minerals for heavy dirty hand and skin cleaning. An amount in hand palms shall be scrubbed around and washed off with water



LAUNDRY HYGIENE PRODUCTS

PROMATIC L CONCENTRATED LIQUID LOW FOAMING MAIN DETERGENT

The powerful formula removes even the most stubborn stains. Can be used for both color and white clothes. Since this is a liquide product it dissolves completely and penetrates the dirt faster than powder detergents. Can be used on all dergrees can be used with oxygenated and chlorinated additives



ALCON C 45 NEUTRAL OIL AND STAIN REMOVER FOR SENSITIVE CLOTHS

ALCON C +% is aneutral oil and stain remover for sensitive clothes. Used pre main wash spray on stains and prewash with low temperatur. Can also be used as additive to main detergent.



ALCON ALKALINE HEAVY DIRTY OIL, STAIN AND BLOOD REMOVER

ALCON is a heavy duty oil stain and blood removing additive to main detergent and also used as prewash liquid. Spray on the stain and wash clothes blood stains is washed low temperatures as 30 C^o dgr.



PROWHITE-OX OXYGEN-BASED LIQUIDE BLEACH ADDITIVE

Main wash additive agent used for bleaching and stain removing of white and colored laundry. Can be used safer than chlorine bleach. Gives excellent results at temperatures above 60 °C degrees.



PROWHITE CHLORINE-BASED BLEACHING ADDITIVE POWDER

Bleaching and stain removing for white clothes, towels and linen can be used alone as main wash for bleaching or as additive to other main wash detergents.



LAUNDRY HYGIENE PRODUCTS

PROLIME HARDNESS AND GREYISH PREVENTER

PROLIME is hardness preventer for laundry machines caused by water hardness caused by lime and minerals shall be used alone as prewash to remove lime and hardness on laundry.



DRAGON VISCIOUS CLORINE BLEACHING ADDITIVE DETERGENT.

Chlorine bleach and stain remover, tickend liquid laundry washing agent. It should be used only for white laundry washing as whitener and stain remover on White clothes and garments for low degrees washing.



SOFTER LAUNDRY SOFTENER

Laundry softner gives the cloths a fresh scent of perfüme and gives a antistatic properties to the cloths.



LAUNDRY SOFT LAUNDRY PERFUME

Laundry parfume for clothes and linen Shall be used either with main wash or softening agents. Also need to be used as deodoriser on dried and ironed cloths and linen for long lasting freshness.



PRODES LAUNDRY MACHINE DISINFECTANT

Prodes is a disinfectant to be used specially for hospital and hotel laundry washing to prevent spread of bacteria and viruses . Keeps also machines in hygienic status and makes cloths and linen disinfected.



LAUNDRY HYGIENE PRODUCTS

RUST-EX TEXTILE RUST REMOVER

RUST EX is used to remove rust stains on textile fabric that comes from water hardness or from other sources. Rust Ex is used as a local stain remover spray on the rust spot and wash clean in laundry machine or manual wash.



SOLVENT BASED CLEANERS

SAFE SOL D-500

NON FLAMMABLE INDUSTRIAL SOLVENT DEGREASER FROM METAL SURFACES

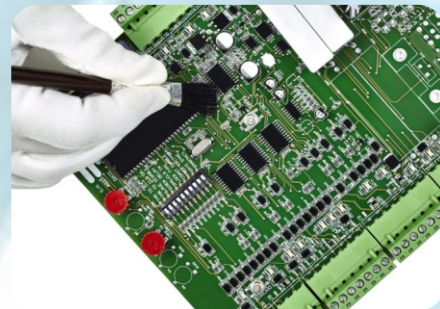
SAFE SOL D 500 is used for cleaning degreasing of metal surfaces it is a pre paint cleaning solvent use either by spray or presoak after degreasing surface should air dry with pressure or wiped clean before painting.



ELECTRON

ELECTRONIC CARD CLEANER

ELECTRON is a electronic card cleaner for electrical devices. It removes dust and dirt accumulated in boxes etc. It can be used as dipping or spray for cleaning and dried with pressurised air.



OWC 101

VARNISH AND POLYESTER REMOVER

OWC 101 S is solvent based varnish remover effective on most kind of varnishes cleans rapidly and safe. Spray on the surface and let sit for 10-15 min. Then scrape or brush clean.



DEWAXER-ST

SOLVENT-BASED WAX REMOVER SOLVENT 1:3

DEWAXER ST is solvent based wax remover and degreaser. It is mixed with water to form a viscous emulsion by mixing with water 1/3 part this emulsion clings on vertical surfaces to act and dissolve. After use wash off with pressurised water it can also be used as engine cleaner to clean oil and dirt.



SUPER FAST

OIL, GREASE AND TAR CLEANER

SUPER FAST is solvent based oil, grease and tar cleaner and remover. It is mixed with water to form a viscous emulsion by mixing with water 1/4 – 1/8 part this emulsion clings on vertical surfaces to act and dissolve. After use wash off with pressurised water it can also be used as engine cleaner to clean oil and dirt.



SOLVENT BASED CLEANERS

BREAK CLEAN

BRAKE AND CLUTCH CLEANER

BRAKE CLEAN is a vehicle brake and clutch cleaner to remove dirt, oil and traffic films and clutch dust on brakes. Quick evaporating use with pressurised spray can or as aerosol spray. Just spray on and clean



SPOT OUT

TEXTILE STAIN REMOVAL, SOLVENT

Spot out is a product developed for use in textile industry. Use with solvent spray gun. It can be used on Wool, cotton, silk, synthetic fabric, nylon, Orlon, and other synthetic materials.



PAINT STRIPPER LQ

PAINT STRIPPER LIQUIDE

Liquide paint stripper to remove defect painting on metal surfaces. It is for immersion use. Immersion shall be done in a container for dipping. Since it's fast evaporating container need to be closed until paint is dissolved. Dissolved paint removed with a spatula or brush.



PAINT STRIPPER GEL

PAINT STRIPPER GEL

Gel paint stripper to remove defect or old paint on metal surfaces. It is for brush or spray use on vertical surfaces. Any surface where it is used should wait until paint is dissolved. Dissolved paint removed with a spatula or brush.



PROTECTIVE AND LUBRICANT PRODUCTS

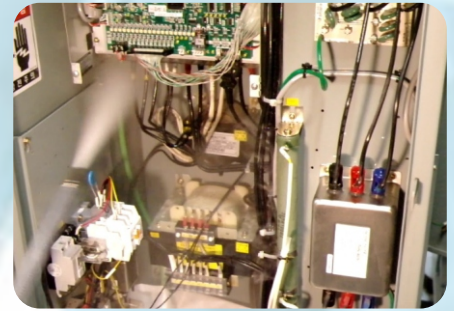
CORRO PREVENT CORROSION PROTECTIVE OIL

CORRO PREVENT is to be used on all kind of metal surface that need to be protectet against rust and corrosive oxidation, protects up to 1-2 years depending on the layer application on surface that need to be protected and enviroment where parts are stored.



PROCON PROTECTING OIL FOR ELECTRICAL DEVICES

Procon is developed to prevent humidity on electrical and electronic devices And contactors. It protects from electrical short cuts and damages because oh humidity.



PENETRATING PLUS PENETRATING OIL

Penetrating plus is versatile product to loosen rusted bolts and screws and helps to loosen easily. It also protects and remove humidity from electrical parts and contacts on vehicles and electrical devices.



FORM OFF PU SOLVENT AND SILICONE-BASED MOULD RELEASER

Silicone-based mold releaser within industry for plastic and polyuretan mould forming. It helps products to release mould forms and helps to produce quality items.



FORM OFF WATER SOLUBLE SILICONE MOULD RELEASER

FORM OFF is water based silicon mould releaser that helps products release from mould form easily. Where solvent based is not desired then this product is preferred. Non flammable non toxic



PROTECTIVE AND LUBRICANT PRODUCTS

INOX BRIGHT STAINLESS STEEL BRIGHTNER

Inox Bright is a special product to maintain stainless steel surfaces clean and shine
Neat used, spray and wipe to dry and shine with a soft cloth

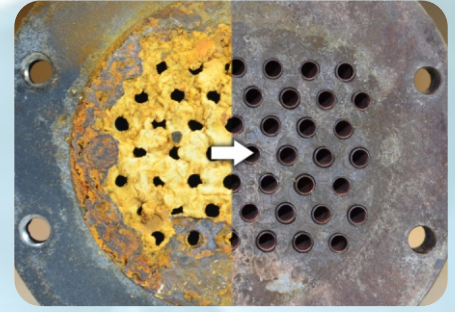


ACIDIC CLEANERS

LIMEX XT

LIME, SILISIUM AND SULFUR REMOVER

LIMEX –XT is a powerfull lime scale and silisium cleaner and remover. Where hard water is used there will be deposit of minerals which hard to remove like heat exchanger and coolers and radiators.



LIMEX DG

SOLAR PANEL CLEANER

LIMEX-DG is concentrated solar panel and radiator cleaner. Solar panel on the field is always getting dirty by the weather and enviromental pollution which ends with deposit on the panels. They need to be cleaned for effectiv outcome of energy. LIMEX-DG cleans and remove dust and scale minerals on the panels.



SILIS CUT

SILISIUM AND SCALE REMOVER

SILIS CUT is concentrated and heavy duty scale and silisium remover. caused by underground water and hard water where other descaler dont work silis cut will and clean surfaces that need to be cleaned. It is used on boiler tanks , heat exchangers circulating systems, textile sector, winery, beverages, hotels and SPA, shower cabins etc.



SILIS CUT GEL

SILISIUM AND SCALE REMOVING GEL

SILIS CUT GEL is tickened for vertical surfaces to clean machines and equipmants, loading car and trucks water tanks used for water storage use with brush, roller or sprey on vertical surfaces.



LIMEX K

LIMEX-K SULFUR AND SCALE REMOVER

LIMEX-K is suitable to use on thermal hotels pool and bathsink and shower cabins. It is a heavy duty cleaner for versatile use in the industry wher deposit build up of water hardness and thermal water.



ACIDIC CLEANERS

BETON OUT CEMENT AND MORTAR DISSOLVER

Solves the cement mortar and lime accumulations. Used in the construction industry and the cement industry it is a product of high activity, concentrated acetic cleaner of mixers and casting mold. Post cleaning of new buildings residues of cement etc.



COOL BRIGHT ALUMINIUM HEAT EXCHANGER AND RADIATOR CLEANER

COOL BRIGHT is a aluminium heat exchanger radiator cleaner. It cleans accumulated dirt, dust and grimes from external units and cells. It can also be used for aircondition external and internal unit cleaning.



CLEAN&PICKLE METAL SURFACE PICKLER

CLEAN&PICKLE is used for metal surface preparing before painting or rubber lamination of moulded rubber. Also helps fosfating adhere better on metal surface so that the paint can stick to surface.



METAL CLEAN METAL SURFACE CLEANER

Metal surface cleaner of light rust and oil pre painting. All kind of metal surface that need to be painted and have corrosion protective oil and slightly rust can be cleaned by immersing or spray rub or brush and wash with water and dry before painting and fosfating



METAL FG METAL SURFACE PHOSPHATING AND DEGREASING

Metal surface degreasing, protection and phosphating product. This product is versatil since it cleans degreasing and protects the surface against rust for short term before painting dilutable 1/10 – 1/50



ACIDIC CLEANERS

ALU BRIGHT

ALUMINIUM SURFACE CLEANER FROM OXIDES

ALU BRIGHT is surface cleaner on aluminium, cleans and degreasing also scale deposits and oxide can be removed. It is used on all kind of aluminium surface indoor and out door, hotels and restaurant equipments.



METAL FOSFAT

METAL PHOSPHATING

METAL FOSFAT is a liquide Phosphate for metal surface protection. Industrial cleaning and corrosion protection of metal surfaces before painting, phosphate helps paint adhere to surface and protects from rust.



STEEL SHINE

STAINLESS STEEL SURFACE CLEANER AND BRIGHTNER

STEEL SHINE is a special cleaner and brightner it also removes scale and surface rust stains. It is used at production industry, hotels and restaurant equipments to clean and remove surface rust and stains.



SRR SUPER RUST REMOVER

RUST REMOVER LIQUIDE

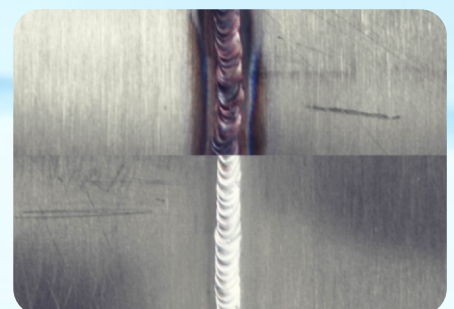
SRR is a acidic liquide rust remover on metal surfaces. It can be used as spray or immersing for small to large metal parts to be cleaned. Concentrated dilutable for heavy to light rusts.



WELD EX

WELDING TRACE CLEANER

WELDEX is a welding trace and carbon cleaner. Aplicate on welding trace with a brush and let ssit for couple of minuts to clean and remove carbon from the surface. After cleaning wash the surface with water if needed use passivating product for neutralizing.



ACIDIC CLEANERS

WELD PROOF WATER BASED WELDING BURR PREVENTOR

WELD PROOF is a preventor for stain and burr from welding that stick on the metal surface. It helps to clean surface because of the dequency effect. It is safe to use for aluminium welding as well as stainless steel.



B&C CLEANER BRASS AND COPPER CLEANER

B&C Brass and Copper cleaner is used for surface cleaning and brightning of Brass and Copper from dull look because of oxidation caused by enviromental conditions as humidity sun exposure and finger prints.



SUPER RUST CONVERTER RUST CONVERTOR ON IRON METAL SURFACES

SRC is a rust converter that makes rusty surface protected against rust once it is applied on iron rust surface. Thick rust need to be brushed with metal brush thin layers also should be brushed and all loose rust cleaned off then applied in two layer after drying surface becomes black forming iron oxide that protects re rusting.



DESCALER LIME SCALE REMOVER

DESCALER is lime scale remover for dishwashing machines. Scale build up causes machines resistant failure and using excess energy consumption. Depending on water hardness machine needs to be cleaned twice a month.



DEGREASER 10 K PLUS BURNED OIL AND CARBON REMOVER

Degreaser 10K plus is a heavy duty alkaline degreaser of burned and stubborn oil .It is to be used in kitchen and food industry cleaning of machinery and surfaces.



WATER BASED ALKALINE SOLVENTS

SLS

CONCENTRATED INDUSTRIAL DEGREASING SOLVENT

SLS is a detergent and solvent combined special formulated degreaser for fat and oil and also mineral oils. No need for rinsing after cleaning it is also used for stain removing on fabric and textile. Cleaning of car interior and alloys.



SLS TURBO

CONCENTRATED NON CAUSTIC WATER BASED DEGREASING SOLVENT

SLS TURBO is a heavy duty degreaser and stain remover on all surfaces. It is useful at home and industry for cleaning of equipments, kitchen furniture, cooking plates and aspirators. Stain removing on textiles and upholstery and carpets.



FCC-ALU

ALKALINE ALUMINUM FAN COIL CLEANER

FCC-ALU is an alkaline highly dilutable fan coils air conditioner, heat exchanger fan coils degreaser and cleaner of aluminium surfaces which can be clogged of airborne dirt and dust. Cleans without damaging coils and surfaces.



DEGREASER 10 K PLUS

CONCENTRATED LOW FOAMING DEGREASER AND CARBON CLEANER

DEGREASER 10 K PLUS is a low foaming heavy duty degreaser. Cleans fat and oil burned pan and trays and kitchen floor and walls. Also industrial use for equipment and hard surfaces and floors. Degreasing of oil and grease in industries.



FORCE CLEAN

FOAMING GARBAGE CONTAINER CLEANER

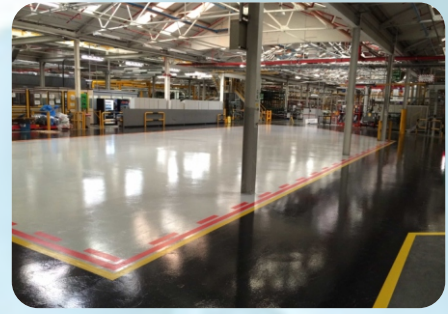
FORCE CLEAN is special formulated as foaming garbage cleaner and deodoriser cleans inside and outside of containers with foam making equipments. Just spray foam on surfaces and leave for dissolving the dirt and rins afterwards with pressurised water.

WATER BASED ALKALINE SOLVENTS

PRO CLEAN

HARD SURFACE DEGREASER AND CLEANER OF RUBBER AND TIRE MARKS

Proclean MX is designed to use on hard surfaces for manual use. It cleans surfaces from oil and dirt incl. Tire and rubber stains. It can also be used on epoxy covered floors. It is user and environmental friendly highly dilutable with water.



PRO CLEAN MX

HARD SURFACE CLEANER AND DEGREASER FOR

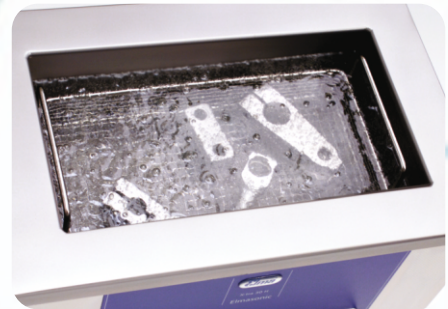
PRO CLEAN MX is a degreaser and cleaner for automatic machines to clean hard surfaces from oil and dirt and rubber stains of forklifts and trucks. Biological degradable and environment friendly.



TETRASONIC

ULTRASONIC WASHING LIQUID

TETRASONIC is a liquid detergent for ultrasonic machine use. It cleans dirt and grimes on metallic parts it can be used on various metals non corrosive. User and environmental friendly dilution ratio is %1-%3 depending on surface dirt to be cleaned.



GOLDEX 750

CONCENTRATED GOLD AND JEWELLERY WASHING LIQUID MACHINES

GOLDEX 750 is washing liquid for gold, silver and jewellery. It is used to clean old and new jewellery from body fat and dirt and new jewellery from polishing residues. This is used for washing in ultrasonic machines. Cleans all kind of jewellery with enzymes for fast and safe cleaning.



DISINFECTANT CLEANER

CONCENTRATED DEGREASER AND DISINFECTANT

DISINFECTANT CLEANER is a degreaser with disinfection capability. Effective against bacteria, fungus and viruses can be used on food production units and equipments and surfaces. After cleaning wash off with fresh water. Can also be used where hygiene is desired.



WATER BASED ALKALINE SOLVENTS

DE-ICER

CONCENTRATED ICE AND SNOW DISSOLVER

DE ICER is a special formulated de icing product it can be used on the rhodes prior to snow falls and after snow falls to melt and prevent ice building on the rhodes. It can be used with snow plowing trucks that have liquid tanks with spray units.



ECOLOR

NATURAL GRASS AND PLANT COLORANT

E-COLOR is natural colorant for grass and plants to give grass green color during hot summer days to prevent grass and plants to look bad and dry. It saves water since grass and plants do not need water as often. It is also proved that it is not carcinogenic and non-toxic to earth and humans. 100% natural colorant.



ALGENON

POOL AND WATER TANK ALGAE PREVENTER

ALGENON is new technology disinfectant and algae, mold and fungus preventer in pools and water tanks. Highly effective because of nano silver in the formulation. It is long-lasting in water tanks and pools with no loss of water.



ECOLOR NATURAL GRASS COLORANT



The yellowing of the grass in the green areas due to seasonal conditions and the loss of color when some grass types (Bermuda grass and Cynadon type grasses) go into hibernation stand as a problem. Regular maintenance and watering of lawns can be quite costly. Ecolor organically provides solutions to the lawn care problems of stadiums, hippodromes, golf courses, baseball fields, cricket fields, large green areas and parks. It offers fast and effective solutions in landscape applications.

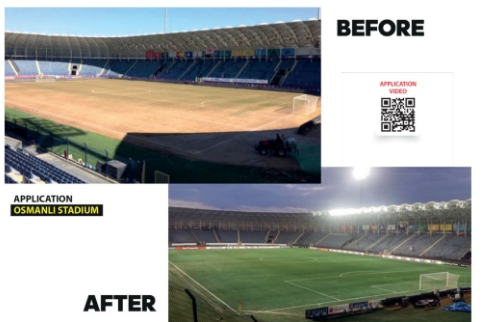
Ecolor has been produced with 15 years of R&D studies. Ecolor is not paint, it consists of a natural colorant, an organic formula mixture.

Features of E-Color

- Minimizes maintenance costs.
- It reduces water consumption by 75%.
- Since it does not contain dyes, it does not color the soil with irrigation.
- It has been proven by Ege University reports that it protects the soil, grass and the living things in it.
- It prevents moisture loss from the grass.
- Protects the grass from bad weather conditions. (Snow, Rain, Hall, Extreme Sun etc.)
- It extends the irrigation time 2 to 4 times depending on the humidity of the air.
- It prevents the grass from drying out by reflecting the sunlight.
- Different colors can be applied on the grass.
- Prevents grass rust disease.
- It has been approved by Ege University Analysis Laboratories that none of the prohibited azo dyestuffs are used in its production.
- Ecolor is produced with natural pigments. It is a water-based product. It does not harm the plants.
- Ecolor does not affect the photosynthesis system and natural life span of plants.
- After application, it allows the grass to breathe thanks to its micro pores. It reduces the need for irrigation. It contributes to the life of the grass without wilting and drying for weeks.



2017 yılı Osmanlı Spor-Olimpiyatos UEFA magna hazırlanan Osmanlı Stadi
Ottoman Stadium prepared for The Ottoman Spor and Olympikos match in 2017



Application of Ecolor

Its application is very practical and economical. Lawns normally need to be watered continuously morning and evening every day. Afterwards, as the grass grows, it stays green and grows longer. Being elongated also requires mowing.

After the application of Ecolor, it will be sufficient to water the lawn only as much as it needs every 2-3 days. 20-40 minutes after applying Ecolor. It dries in such a short time. It preserves its color for 4-5 months without being affected by temperature, sun and rain.

For 1 liter of Ecolor, 6-9 liters of water is added and mixed. The ideal mix is 8 liters of water for 1 liter of Ecolor. It can also be used by increasing or decreasing the amount of water according to the condition of the plant. It is mixed thoroughly with water and becomes homogeneous. Then it is applied by spray method. It can be used in all devices, from large spray setups to the smallest backpack-mounted device. 1 Lt. Ecolor colors 30-35 m² grass area. Since the product is completely natural, it should be diluted only in the amount to be used. The reconstituted mixture can be stored for 3-5 days at room conditions, away from sunlight and moisture. Except for white and green, other colors can be applied directly.



OUR DOCUMENTS

CERTIFICATES



TRADEMARK REGISTRATION CERTIFICATES



CONTACT INFO



POLIMOLE



Adakan Industrial Chemistry & Marine IN.C.

Address : Egemenlik Mah. 6106 Sk. No: 40/1
Işıkent Bornova / İZMİR – TÜRKİYE

Phone : +90 (232) 479 2033

e-mail : info@adakangroup.com.tr

web : www.adakangroup.com.tr